

**Ride Name:** Up To The Lake  
**Grade:** Moderate/Beginner  
**Map Required:** OS Explorer 264  
**Total Distance:** 42.0Km (approx.)  
**Approx. Ride Time:** 4hrs  
**Total Height Climbed:** 500m

### Cycling Legend

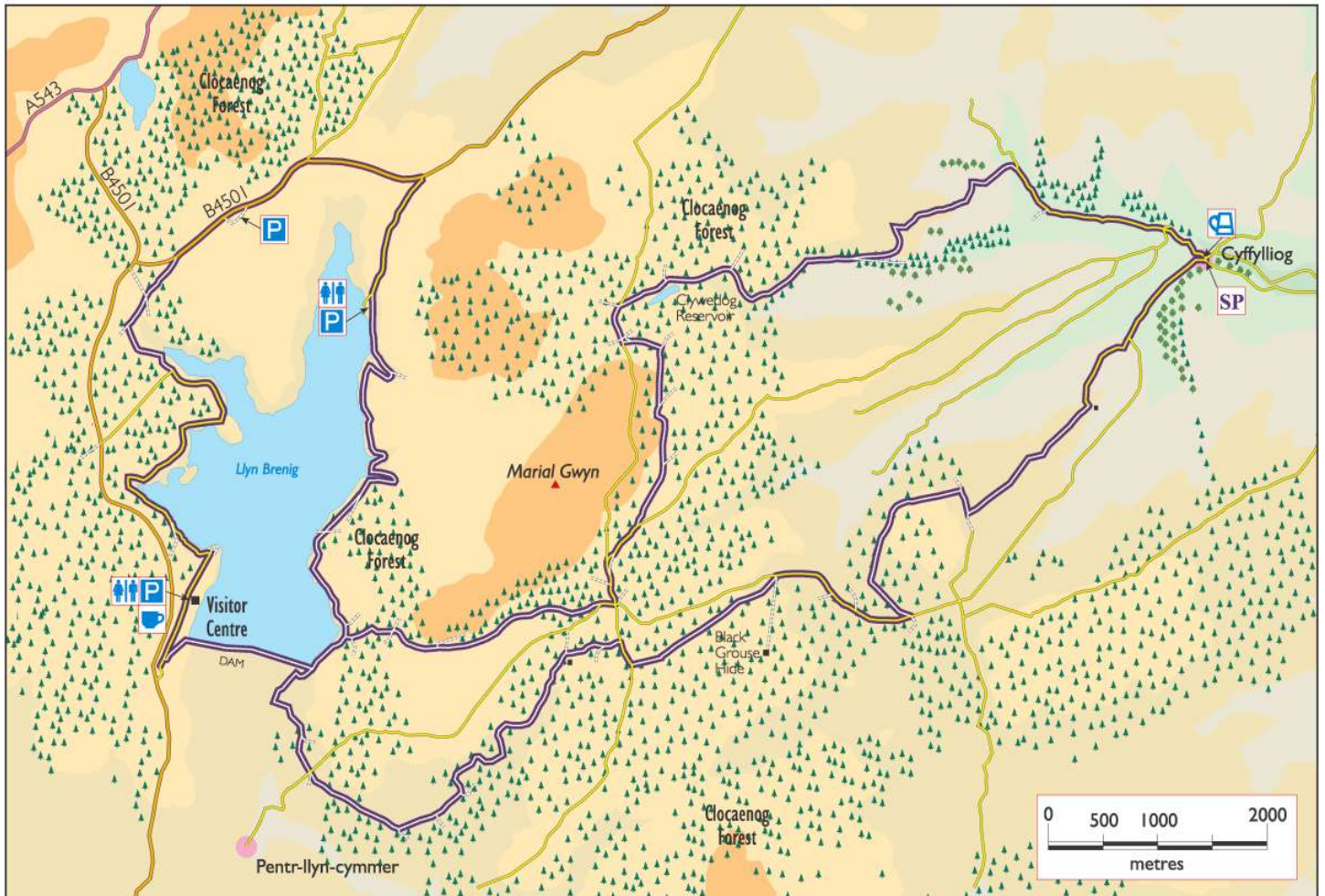
ROUTE A road B road C road Track

The route is shown as a broad purple line with the type of road and surface inset.










----- Other Bridleway

## ROUTE CARD

These maps are based on the 1947 OS 1" to 1 mile map, and updated from ground/bike surveys and aerial photography. © Denbighshire County Council 2003. It is recommended that you purchase the latest OS Explorer map or more detailed mapping.



### Key to symbols

 Start Point	 Pub	 Post Box	 Cafe	 Farm
 Car Parking	 Cattle Grid	 Information	 Public Telephone	

Symbol	Description	Distance (Km)	Height (m)
SP	Park in centre of Cyffylliog. <b>Head south west out of village uphill.</b> At fork in road go straight on up steep hill past small turning on right. <b>Follow road to end, bear right through gate at house.</b>	1.0 1.8	
	Continue to follow track up to forest. At junction with forest road turn right then take first left uphill.	3.3	
	<b>At junction with road turn right.</b>	5.3	
	Continue along road, taking 2nd forest road on left.	6.6	
	<b>Continue to road, turn right then 1st left onto forest road.</b>	8.2	
	Bear right at fork in track.	8.6	
	<b>Bear left at T-junction next to house.</b>	9.0	
	Bear left at fork.	10.8	
	<b>Turn right at junction.</b>	11.0	
	Continue past 2 left turns until meeting surfaced road. Cross straight over.	12.6	
	<b>Continue to end of track, go through gate and follow track to next gate.</b>	13.3	
	At junction with track turn right and head up to the dam wall.	13.5	
	<b>At top of climb continue around the lake in an anti-clockwise direction.</b>	13.8	
	Upon meeting surfaced road, follow away from lake to junction with main road.		
	Turn left.	18.5	
	<b>Follow main road to brow of hill and bear left on large track. Turn right at T-junction with smaller track and descend to gate.</b>	21.6	

At gate continue straight on, onto surfaced road, passing junction on left and over bridge, bear left at next junction.	22.5
<b>Continue past junction on right.</b>	<b>23.7</b>
At fork in road bear left along shore. Beware of oncoming traffic!	26.2
<b>Pass visitor centre and Café.</b>	<b>27.0</b>
Turn left at junction and ride over the top of the dam wall.	27.6
<b>At the end of the dam wall turn left and follow shoreline.</b>	<b>29.0</b>
Turn right into forest over cattle grid and immediately bear right at fork in track.	29.5
<b>Continue straight over crossroads.</b>	<b>29.9</b>
At next junction turn left and continue to climb.	30.4
<b>At junction with surfaced road turn left then 1st right.</b>	<b>32.2</b>
Turn left.	32.8
<b>Turn left at fork in road.</b>	<b>34.0</b>
At next junction turn left.	34.5
<b>At surfaced road turn right.</b>	<b>34.9</b>
Take left turn on to forest road. Past lake on right.	35.3
<b>At next junction bear right.</b>	<b>35.7</b>
Go through gate out of forest. Bear right.	37.5
<b>Turn right at junction.</b>	<b>38.6</b>
At junction with road turn right.	40.0
<b>Bear left at junction.</b>	<b>41.5</b>
Finish back in Cyffylliog.	42.0